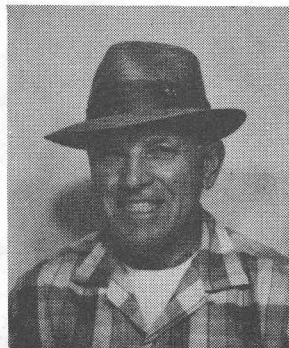


#384 YEAGLEY, Charles G., Jr., W3LM  
NO OTHER INFORMATION

#385 BURROUGHS, E.W., M.D., Ex-K4JHK, K2QKS, Ex-3AIU, W3AQY. Handle "Ed". Born May 9, 1905. First 2-way contact 1920. Occup: General Surgeon. Earl rig, Ford spark coil, fixed gap, wire Helix coil and glass plate foil cond. crystal detector and loose coupler. Member Trenton Wireless Club, Princeton University Radio Club, Delaware Valley Radio Assn.



#386 HUTCHINSON, Harold A., W1EV, Ex-W1TT, W1CXW. Handle "Hutch". Born March 28, 1907. First two-way contact March 1922. (offician, 1920 unofficial). Occup: Sales Engr. for Conn. Light and Power Co., before that was with General Electric Co., Lynn, Mass. Research Department from 1931 to 34. International Silver Co., Meridon, Conn. 1934 to 1936 in Engineering Dept. with Conn. Power and Light Co., from 1936 to present. Early rig: first one just a buzzer and antenna, crystal receiver. Then a VT2 and then a VT4, Hartley self excited, and eventually a SW3 receiver. Member, Meridon High School Radio Club, President 1921. ARRL, QCWA, WPTQ, CWS. SK



#387 VAN DYKE, John, W2AA, Ex-2CX, W2DNW. Handle "John". Born August 21, 1897. First 2-way contact 1910. Occup: Transmitter Technician, Press wireless located at Centereach, L.I. Early rig 2 in. spark etc., loose coupler, Galena detector. Member, QCWA, ARRL, RCC.