



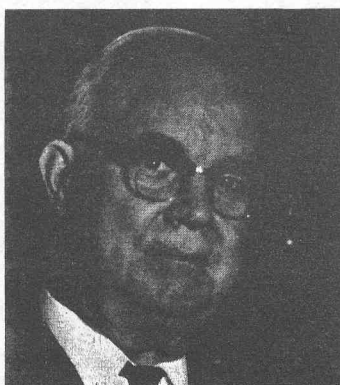
#325 THOMAS, William K, Ex-W5UF, W3RV, 8DE, 8LF, W8QAN, W6QB, W5RB, KL7AK. Handle "Tom". Born April 28, 1897. First 2-way wireless contact 1908. Occup: Retired USAF Military. Radio Engr. with Westinghouse and First Radio Operator of KDKA 1920 period. Organized radio school for USAF in 1942 and turned out over 300 operators. Later, as a CWO, was the Directorate Chief of Staff, Materiel, for the 7th AACS Wing WW2. Veteran WW1, WW2, and Korean War. Retired 30 September 1961 with 21 years Military Service. Is ORS-BPL-WAS, A-1 Operators Club. Former Sec.-Treas. of Andrews Electronic Assoc., Andrews AF Base, Washington, D.C.



#326 CORAM, Harold E., VE2NB, Ex-2BL. Handle "Hal". Born March 20, 1900 in Bristol, England. First 2-way wireless contact 1921. Occup: Retired Bell Telephone Central Office Supervisor. Family moved to Canada 1908. Early rig: E.I. Co. 2 inch spark coil, storage battery, quenched gap, Helix, receiver E.I. Co. Loose coupler, Galena Detector, (Later a Marconi V24 Triode. Now use a Dx-40 with 6L6 outboard modulator. Receiver is HQ129X all band general crystal trap doublet.



#327 KENNEDY, Chester A., W1AN. Handle "Chester or Chet". First 2-way wireless contact October 2, 1909. Born October 2, 1892. Got the wireless "bug" in grammar school. Visited the radio shack of all liners and passenger boats in port. Started with usual gear, spark coil, silicon detector, etc. Studies for First Class commercial operators ticket and discovered that chronic sea-sickness would prevent going to sea; and forged to follow other line of endeavor.



#328 GRAY, George J., W8JDV, Ex-8ARP, 8CCP. Handle "Jack". Born May 1, 1900. First 2-way wireless contact (comm.) 1917. Retired from Crosley WLW and VOA Bethany Transmitters. Operate Gray History of Wireless Museum in Mason, O. Attended Dodges Inst. in 1917. Worked for Marconi Co. then joined Navy in 1918. Attended Great Lakes and Harvard Wireless schools first amateur license 1920, 8ARP, then 8CCP and W8JDV in 1932. Attended Univ of Cincinnati, worked at Iprescioni Equipment Co. Later Crosley Plant until 1937. Trans. to studio work then transmitter work at WSAI, WLW and VOA Bethany Trans. Produced the Grebe story writing book the Crosley Story. Collect wireless gear, books and magazines for museum. Restores old gear and builds replicas.