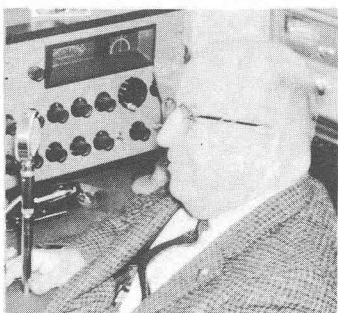


#301 PYLE, W.A.F., W3WR, Ex-W3MA. Handle "Bill". Born June 14, 1899. First 2-way wireless contact 1914. Occup: Mgr. Ind. Dept. Del. Power & Light Co. Started with 2 slide tuner, Galena Detector, etc. 1914 First Amateur license. Ran logs for 4th Naval Dist. on Nauen, Tuckerton & Seville. 1916 joined ARRL. Have first 3 copies QST. 1917 Grad. Drexel EE, set up stn. there. 1925 First Class Comm'l. License and Operator on Tankers, freighters, and passenger ships. 1928 Radio Engr. Del. Power & Light Reg. Prof. Engr. Del. Served WW2 Commun. Stateside, Alaska, S.W. Pacific. Ret. Col. Sig. Corps.



#302 HORN, Charles S., W3PM, Ex-3CY, 3ED, 3PM, W3EUK. Handle "Charlie". Born October 29, 1899. First 2-way wireless contact 1912. Occup: Retired. Received NAA on kite aerial 1909, loose coupler and crystaloy detector-1914. Electrolytic interrupter and rotary spark 1916. 1917-19 WW1 served in U.S. Navy. 1920-21 worked as commercial operator. 1922-26 General Electric Co., RCA, Music Master, Run-A-Radio. 1915-3CY; 1919-3ED & 3PM; 1932-W3EUK; 1948-W3PM.



#303 DIESEL, John F., W2WOA, handle "Doc". Born July 9, 1902. First 2-way wireless contact 1917.



#304 MCAULEY, Charles G., W1KJ, handle "Chuck". Born January 13, 1901. First 2-way wireless contact June 13, 1912. Present occup: Northeast Telephone and Telegraph Co., L.D. Plant Dept. "Have been an average ham. Have taken part in flood, fire, and other emergency nets. Have worked all bands from 200 meters to 2 meters." SK